

CESAB
F O R K L I F T S

The highest level of productivity,
speed and safety, with
Li-ion technology

S010i + P013i

The Power Couple



Li-ION

www.cesab-forklifts.eu

Stacked Power

The S010i is a Li-ion powered stacker with exceptional compactness for maximised productivity

Open mast design and low body height for great driver vision

Gas spring assisted tiller arm for soft return to vertical when released

Thick steel front hood that's built to last, with no fragile plastic parts

Easily accessible open design with less components, for higher truck availability and quicker maintenance

Robust, heavy duty welded forks. Low front chassis for excellent foot protection. Low weight for use in restricted areas like elevators or mezzanine floors

Effective ergonomics for safe and precise handling. Turtle speed for optimal manoeuvrability and safety. PIN-code for no unauthorised use, and no risk of lost keys





The CESAB S010i has a four wheel design and offers highest stability - lift heights up to 3,6 m



P013i: both the drive wheel and the castor wheels have safe foot protections as standard



Stable as a Rock

The P013i has five points of contact for maximum stability and safety, all with foot protection

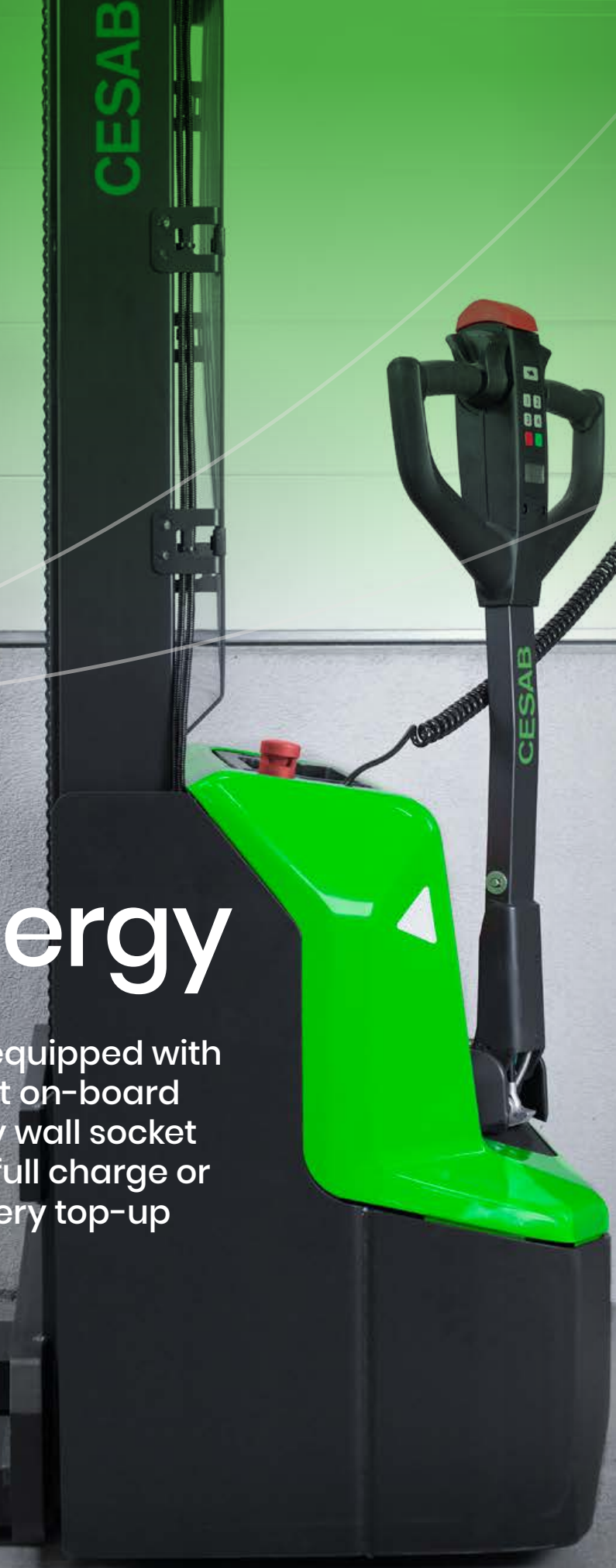


P013i: easy long-side pallet handling. Twin fork wheels as standard, for reduced pressure on floors and easier and silent travel over uneven surfaces

With standard castor wheels the P013i offers a very stable platform. The rugged construction of the castor wheels and the 80 mm diameter don't fear loading boards or docks

Epic Energy

The S010i is equipped with a convenient on-board charger: any wall socket will do for a full charge or a quick battery top-up



P013i: the powerful battery comes in cassette format, fully sealed and easy to handle. The connectors are protected so no risk of short circuits



P013i: the 12 A fast charger is standard, over and above the normal 8 A rate of similar pallet trucks



Zero maintenance Li-ion battery technology that can be charged anywhere; no necessity for a dedicated charging space



Max Manoeuvres

Narrow footprint, large capacity and great lift height, all in a small manoeuvrable package

Faster drive speeds, and turtle speed when tiller arm is in vertical position

Ergonomic butterfly switches for easy driving. Separated buttons for fast lifting and lowering

Both the S010i and P013i have very large steering angles, allowing easy manoeuvring even in the tightest spaces

S010i: double USB-A ports powers terminals, tablets and phones



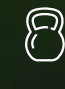
Safe automatic speed reduction when cornering, included as standard in both the S010i and P013i



Strength in numbers


Mechanise your material handling and boost your productivity

 **Compact** – Perfect in confined areas

 **Light** – Ideal on weight restricted floors

 **Authorised** – PIN code user access

 **Usable** – Effortless manoeuvrability

 **Ergonomic** – Designed for easy use

Specifications

	CESAB S010i	CESAB P013i
Nominal capacity	1000 kg	1300 kg
Lift height	2900 / 3600 mm	195 mm
Height mast lowered	1930 / 2280 mm	-
Height mast extended	3337 / 4037 mm	-
Service weight with battery	565 / 594 kg	135 kg
Load centre	600 mm	600 mm
Overall length	1710 mm	1530 mm
Length to fork face	560 mm	380 mm
Overall width	800 mm	540 mm
Turning radius	1350 mm	1330 mm
Travel speed with / without load	4.2 / 4.5 km/h	4.6 / 4.8 km/h
Lift speed with / without load	0.11 / 0.16 m/s	0.02 / 0.025 m/s
Drive motor rating S2 60 min	0.65 kW	0.65 kW
Sound level EN 12053	< 70 dB(A)	< 70 dB(A)

CESAB S010i and P013i

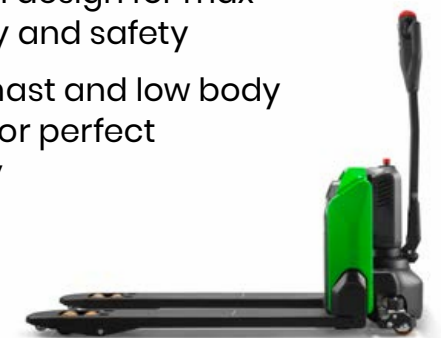
- Identical drive units – shared design and parts for easier servicing
- Low weight – for use in restricted areas like elevators or mezzanine floors
- 24V Li-ion battery – Full charge in 2,5 hours from any wall socket
- Intuitive controls – Easy to operate with left or right hand, even in confined areas
- Turtle button – Creep speed for optimal manoeuvrability and safety
- Manoeuvrable – Perfectly controllable due to the very wide steering angles
- Safe – Automatic speed reduction while cornering, tiller arm within the truck profile
- PIN-code access – no unauthorised use, no risk of lost or broken keys
- Automatic brake – the upright tiller arm activates parking brake, the truck is secured
- Front chassis with low ground clearance – excellent foot protection
- LCD Display – constant information on the status of the truck
- Open design – Less components, easily accessible, for better truck availability
- Thick steel front hood – built to last, no fragile plastics
- Heavy duty welded forks – More robust and durable than folded sheet metal
- Gas spring assisted tiller arm – soft return to vertical when released
- Upright tiller arm driving in Turtle mode – easy working in tight spots

- Auto lock on slopes – no roll-back, full control
- 210 mm polyurethane drive wheel with optimal grip
- Separated lift and lower buttons – no unintentional load movements
- Easily accessible emergency switch – quick stop in case of emergencies
- Easily accessible horn switch – for a safe work environment



CESAB S010i

- Programmable auto shut-off – saves energy, no unauthorised use
- Double USB-A port powers terminals, tablets and phones
- 4-wheel design for max stability and safety
- Open mast and low body height for perfect visibility



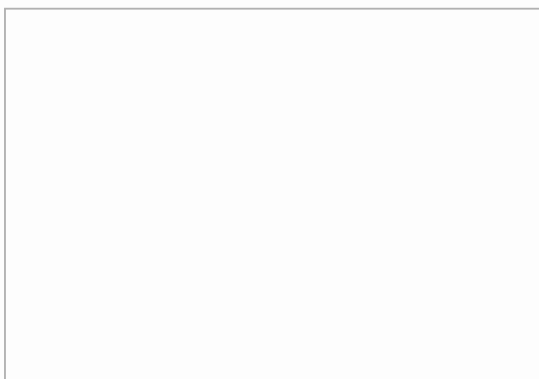
CESAB P013i

- Bogie fork wheels with climber wheels for entering of closed pallet
- Caster wheels with safety foot protection
- Fork marks for easy 800 mm pallet handling

Super Support

Service, support and parts availability through our large dedicated network

Your authorised CESAB dealer



www.cesab-forklifts.eu

CESAB

spec sheet

CESAB S010i

1.0t capacity

Li-ion powered stacker

Li-ION



S010i

Truck Specifications

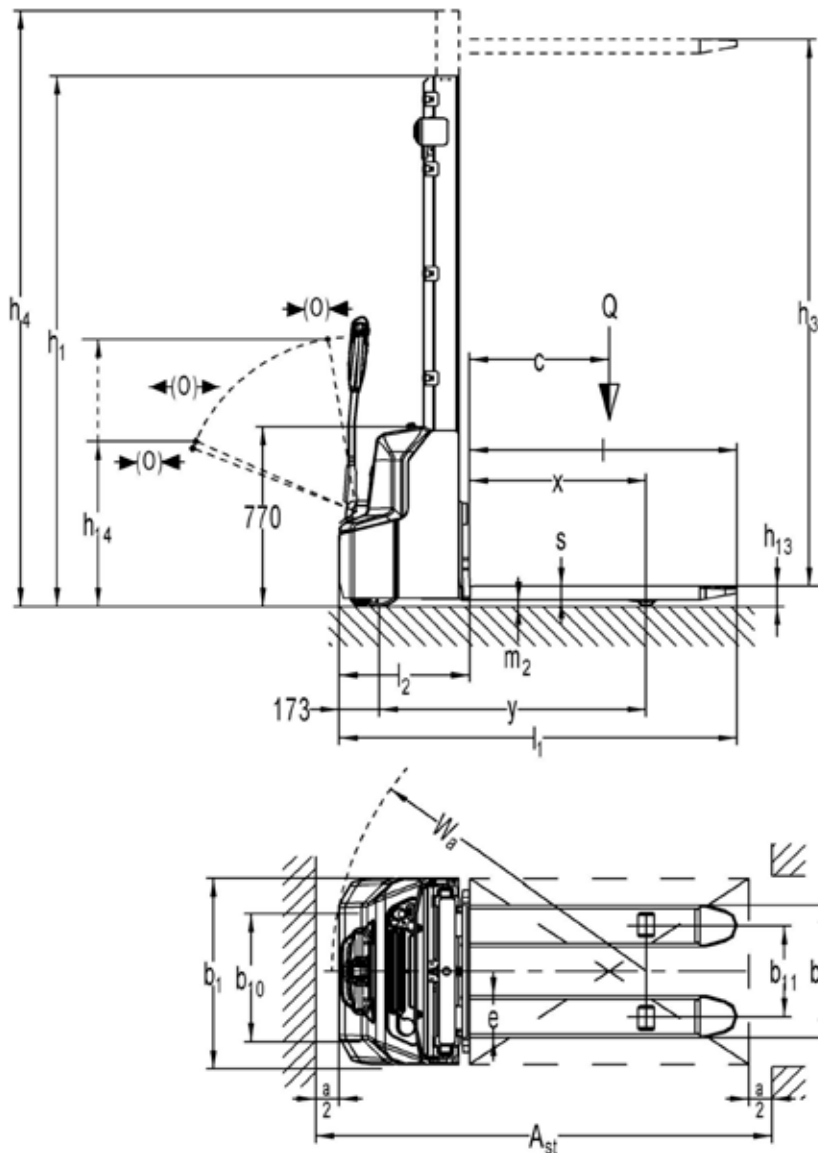
CHARACTERISTICS				
1.1	Manufacturer		CESAB	CESAB
1.2	Model designation		S010i - 290	S010i - 360
1.3	Drive		Battery (Li-ion)	Battery (Li-ion)
1.4	Operation		Pedestrian	Pedestrian
1.5	Load capacity	Q	[t]	1,0
1.6	Load centre distance	c	[mm]	600
1.8	Load distance, centre of support arm wheels to fork face	x	[mm]	760
1.9	Wheelbase	y	[mm]	1147
WEIGHT				
2.1	Service weight (battery included)		[kg]	565
2.2	Axle load, with load, front/rear		[kg]	565/1000
2.3	Axle load, without load, front/rear		[kg]	435/130
435				139
WHEELS AND TYRES				
3.1	Wheels			Polyurethane
3.2	Wheel size drive wheel	∅ x width		210 x 70
3.3	Wheel size load wheels	∅ x width		84 x 93
3.4	Wheel size castor wheel	∅ x width		100 x 50
3.5	Wheels, number front/rear (x = driven)			1x + 1/2
3.6	Track width, front	b ₁₀	[mm]	550
3.7	Track width, rear	b ₁₁	[mm]	400/515
DIMENSIONS				
4.2	Height, mast lowered	h ₁	[mm]	1930
4.3	Free lift	h ₂	[mm]	-
4.4	Lift	h ₃	[mm]	2814
	Lift height	h ₂₃	[mm]	2900
4.5	Height, mast extended	h ₄	[mm]	3337
4.9	Height of tiller arm in drive position, min. / max.	h ₁₄	[mm]	710/1150
4.15	Height, forks lowered	h ₁₃	[mm]	86
4.19	Overall length	l ₁	[mm]	1710
4.20	Length to face of forks	l ₂	[mm]	560
4.21	Overall width	b ₁	[mm]	800
4.22	Fork dimensions	s/e/l	[mm]	60x180x1150
4.25	Width over forks	b ₅	[mm]	570
4.32	Ground clearance, centre of wheelbase	m ₂	[mm]	30
4.34.1	Aisle width, pallets 1000x1200 crossways	A _{st}	[mm]	2197
4.34.2	Aisle width, pallets 800x1200 lengthways	A _{st}	[mm]	2145
4.35	Turning radius	W _α	[mm]	1350
PERFORMANCES				
5.1	Travel speed, with/without load		[km/h]	4,2/4,5
5.2	Lift speed, with/without load		[m/s]	0,11/016
5.3	Lowering speed, with/without load		[m/s]	0,13/0,11
5.8	Max. gradeability, with/without load		[%]	5/10
5.10	Service brake			Electromagnetic
				Electromagnetic
ELECTRIC MOTORS				
6.1	Drive motor, rating S2 60 min.		[kW]	0,65
6.2	Lift motor, rating S3 7,5%		[kW]	2,2
6.4	Battery voltage, nominal capacity K _s		[V/Ah]	24/60
6.5	Battery weight +/- 5%		[kg]	19
6.6	Energy consumption according to EN16796:2016		[kWh/h]	0,47
OTHERS				
8.1	Type of drive control			DC speed control
8.4	Sound level at driver's ear according to EN 12 053		[dB(A)]	< 70

Truck performance and dimensions are nominal and subject to tolerances.
 Cesab Material Handling Europe products and specifications are subject to change without notice.

S010i

Dimensional Drawings

CESAB S010i			Duplex Tele	
h_{23}	Lift height ($h_{13} + h_3$)	mm	2900	3600
h_3	Lift	mm	2814	3514
h_1	Height, mast lowered	mm	1930	2280
h_{23}	Free lift, ground to top of forks	mm	-	-
h_4	Height, mast extended	mm	3337	4037





Contact your local CESAB dealer to get professional advice and personalised, local service tailored to your business

Your authorised CESAB dealer



The data in this specification sheet was determined based on our standard testing conditions. Operating performance may vary depending on the actual specification and condition of the truck as well as the condition of the operating area.

Availability and specifications are determined regionally and are subject to change without notice. Please consult your authorised CESAB dealership for further details.
SPEC_S010i_EN_2021 / Ucan V03 – Copyright CESAB Material Handling Europe.

